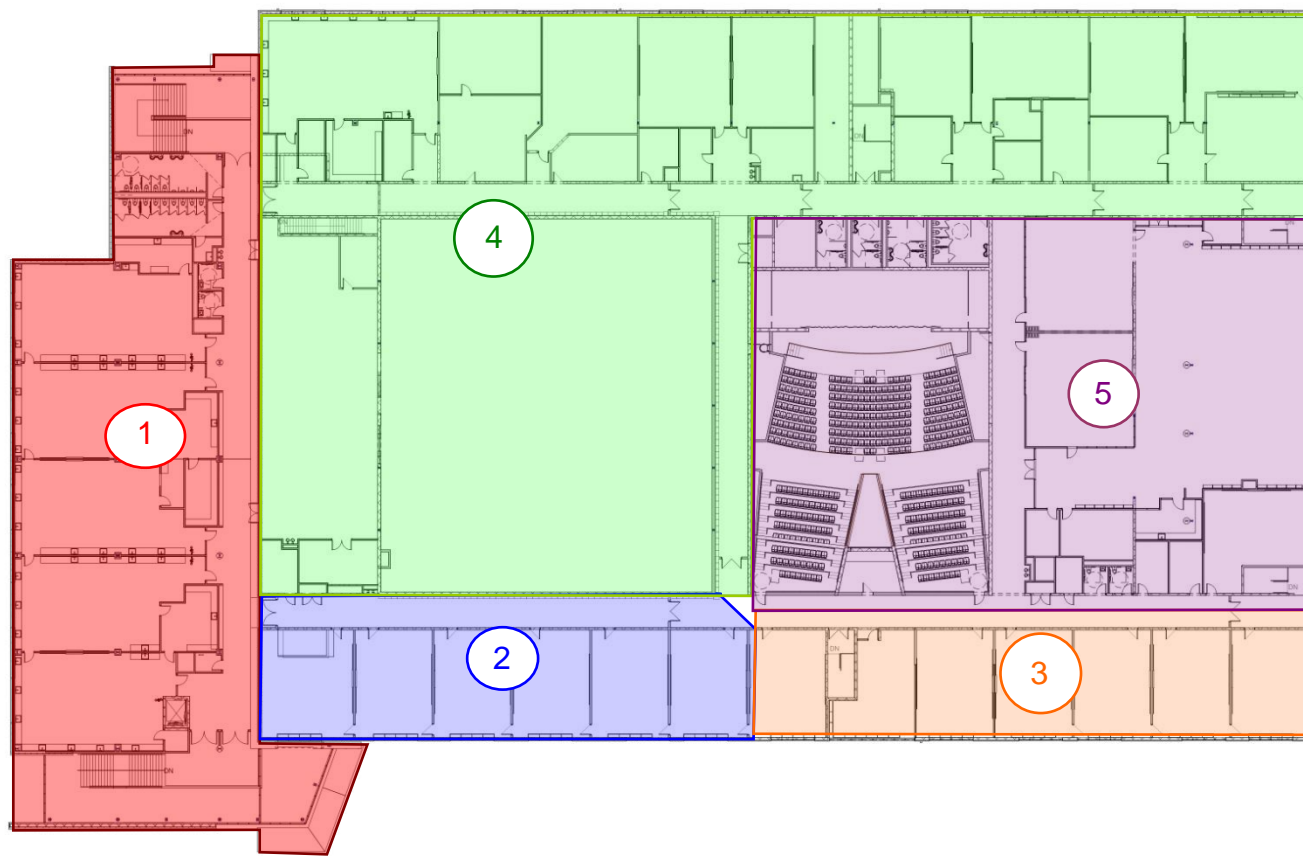
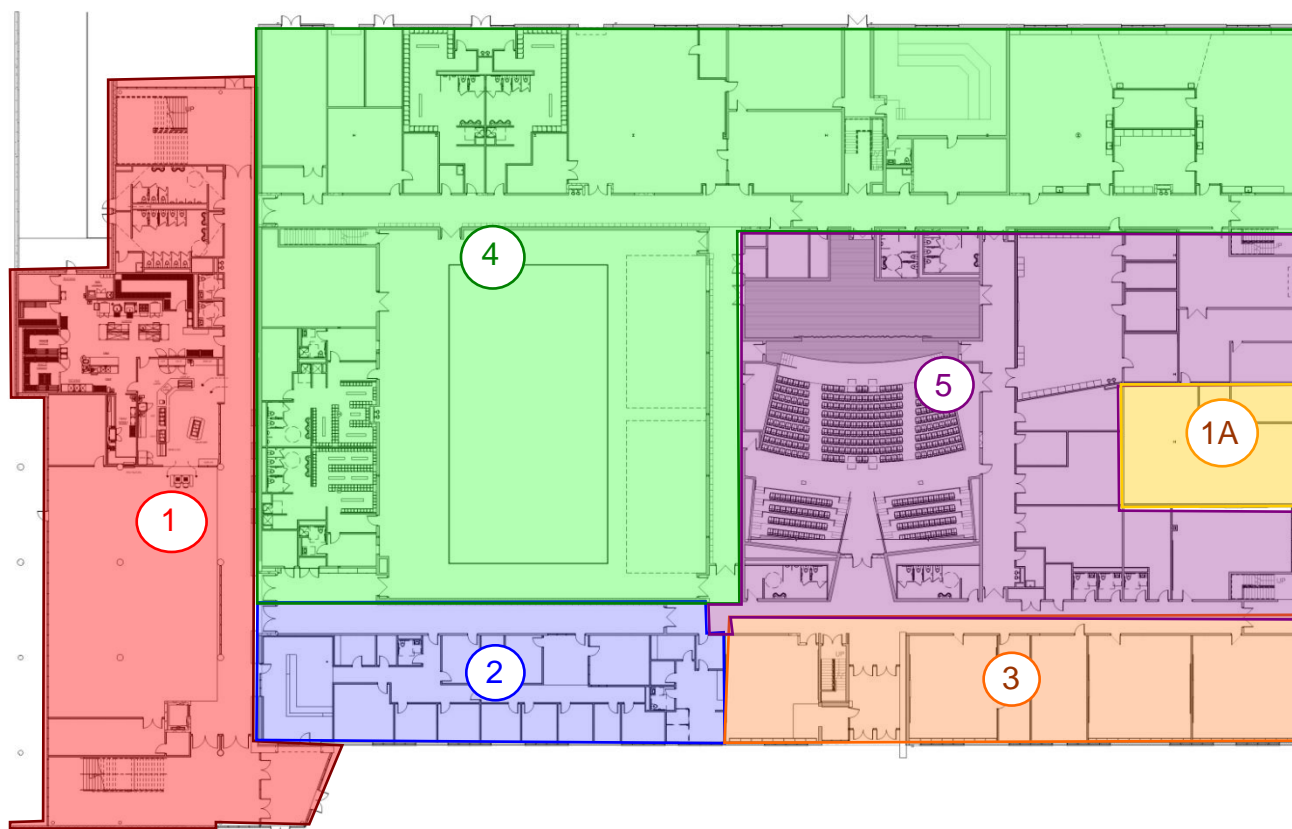


NORTON HIGH SCHOOL ADDITION AND RENOVATIONS
PRELIMINARY PHASING APPROACH – August 29, 2011

Second Floor



First Floor



NHS Phase Summary

Phase No.	Name / Description	Start	End
1	New Addition	March 1, 2012	December 2012
1A	New Mechanical & Elec. Rms. in existing building	June 27, 2012	December 2012
1B	Summer Work 2012 – Corridor work and abatement	June 27, 2012	Sept. 1 2012
2	Existing North East classrooms 1 st & 2 nd flrs. (12) Classrooms total	January 3, 2013	March 22, 2013
3	Existing North West side administrative space 1 st and 2 nd flr. classrooms	April 1, 2013	June 27, 2013
4	Summer Work 2013	June 2013	Late August 2013
5	Final Building Areas	June 2013	December 2013